

NONPROFIT ORG  
U.S. POSTAGE  
PAID  
NEWARK, DE  
PERMIT NO. 2

## Mark Your Calendar

AUGUST 15 – CAMP IMAGINE SHOW OPENING  
RECEPTION

AUGUST 23 – SIDEWALK CHALK FESTIVAL

SEPTEMBER 5 – THE EGO SHOW OPENING RECEPTION



"DEVELOPING  
COMMUNITY  
THROUGH  
THE ARTS"

MARKET EAST PLAZA  
276 E. MAIN STREET  
SUITE 102  
NEWARK, DE 19711



# ARTFORMS

AUGUST-SEPTEMBER 2008

## In this show, it's all about ego!

When "The Ego Show," the first national exhibit in the NAA's 15-year history, opens on Friday, September 5, visitors will see work by 25 artists from 10 states – in media ranging from photographs and porcelain to mixed media on wood and jewelry.

Philadelphia artist Peter Prusinowski took the top prize for the photograph below. Second place was awarded to Brent A. Holland of Iowa for the painting "Self Portrait I," and third place went to Roxanna Tuff of Texas for "Alter Ego." The juror was Ryan Gover of the Biggs Museum of American Art in Dover.

### It was time to 'go national'

The NAA's Exhibition Committee decided it was time for the NAA to try a show that solicited entries from across the U.S. The gamble paid off.



First-place winner: "Vital Essence - Latin America Series - Rio de Janeiro, Brazil," by Peter Prusinowski

"We held an 'Ego Show' several years ago, when we were still in the Art House on Delaware Avenue," explains NAA Executive Director Terry Foreman. "It stirred up lots of interest and we thought it would be a great theme for our first national show. Our juror agreed that it was a fun and intriguing idea."

Other artists with work in this show, listed by state, are: *Alabama*: Uta-Maria Krapf, Kaitlin Redborg; *Delaware*: Paula S. Bell, Doris Crowley,

Continued on page 10


**Contact us**

276 E. MAIN ST., SUITE 102 • NEWARK, DE 19711  
302-266-7266 • WWW.NEWARKARTSALLIANCE.ORG



The Newark Arts Alliance is a locally supported cultural non-profit organization. Our mission is to provide the citizens of greater Newark with the opportunity to explore and display their creativity, as well as participate in cultural events that build community. We provide the means to celebrate life through all forms of artistic diversity.

**NEWARK ARTS ALLIANCE**  
 LOCATION: MARKET EAST PLAZA • 276 E. MAIN STREET • SUITE 102  
 HOURS: TUES-FRI 12-7 • SAT 10-4 • SUN 12-3  
 PHONE: 302-266-7266 • E-MAIL: INFO@NEWARKARTSALLIANCE.ORG  
 WEB SITE: WWW.NEWARKARTSALLIANCE.ORG

 The NAA's programs are made possible, in part, by grants from the Delaware Division of the Arts, a state agency dedicated to nurturing and supporting the arts in Delaware, in partnership with the National Endowment for the Arts.



AgoraNet, Inc. of Newark sponsors the NAA Web site hosting and management.

### NAA Advisory Committee

TERRY FOREMAN executive director, grant writing 302-731-5801  
 JEFF SMITH gallery shop  
 TERRI GILLESPIE public relations director/ArtForms editor 302-489-9436  
 MAUREEN KAMERICK main gallery committee

### Project Coordinators

AGORANET webmaster  
 PAMELA SKWISH art loop 302-731-9289

### Board of Directors

RAY MAGNANI president	MICHELE C. MCCANN
LAURA WAY treasurer	PAUL SCHLOSSER, JR.
BARBARA FRENCH secretary	JEFF SMITH
CAROL BONCELET	KRISTINA WATKINS
NANCY BRESLIN	STEPHEN WEBB
GORDON HETHERSTON	

## Thanks for supporting the arts!

### RECENT RENEWING & NEW MEMBERS

<b>Benefactor</b> Joe Charma & Dawn Calzada	Jessica Palmer Gzifa Akuji Niki R. Chester Mark Houlday Donna Teleis Pat Baldwin Karen Hornor Dot Milsom Robanne Beads Rosemarie White Mr. and Mrs. N. Simons John Farnum Hope LaChance Rebecca Greenblatt & Family Marcia Roe Bruce Tucker Amalie Ledwith Susan Kiley	Arlene Finocchiaro Deanna Finocchiaro Nicole Thomas <b>New Members</b> Wynn Breslin Olga Dmytrenko Sue Milazzo Angel Catala Bill Naylor Ron Wenger Aina Nergaard Nammack Stephanie Patterson Allison Patterson Eliza Caws J. Andrew Winter Jacquie Hughes-Cohen
--	---	--

## NEWARK ARTS ALLIANCE MEMBERSHIP FORM

NAME: \_\_\_\_\_

ADDRESS: \_\_\_\_\_

CITY, STATE, ZIP: \_\_\_\_\_

PHONE: \_\_\_\_\_ E-MAIL: \_\_\_\_\_

EMPLOYMENT: \_\_\_\_\_

PLEASE SEND ME INFORMATION ABOUT VOLUNTEER OPPORTUNITIES

#### ANNUAL MEMBERSHIP OPTIONS

\$20-STUDENT  \$30-INDIVIDUAL  \$50-FAMILY  \$100-ORGANIZATION

#### PREMIUM MEMBERSHIPS – INDIVIDUAL OR FAMILY

\$50 TO \$99-FRIEND  \$100 TO \$249-PATRON  
 \$250 TO \$499-BENEFACTOR  \$500 & UP-PICASSO CLUB

MAKE CHECK PAYABLE TO: NEWARK ARTS ALLIANCE  
 276 E. MARKET ST., SUITE 102, NEWARK, DE 19711

FOR OFFICE USE
CK _____
DATE _____
AMT _____

(The Cure), and John Mayall, as well as music industry executives.

More than \$150,000 in cash and prizes will be shared among the 62 winners, including a \$25,000 grand prize. This year's competition includes a music video category. For information on entering songs by mail or online, and an entry form, go to [www.songwritingcompetition.com](http://www.songwritingcompetition.com).

**DDOA Individual Artist Fellows at Biggs.** "Award Winners III," an exhibit featuring the talent of all 13 Individual Artist Fellows named by the Delaware Division of the Arts for 2008, runs through October 26 at the Biggs Museum of American Art in Dover. These artists were chosen out of a group of 97 applicants. The artists are:

- Visual arts – Alida Fish, Robert Bickey, Nancy Breslin, Lori Crawford, Karin Snoots, Chad States, and Andrew Wapinski;
- Literature – Piotr Florczyk, Marry Kennedy, Annette Opalczynski, and C. Delia Scarpitti;
- Music – Mark Haggerty;
- Media arts – Paul Hiuchan.

In conjunction with this exhibition, the museum will be offering the Third Annual Summer Workshop Series, with classes led by a selection of the 2008 fellows. Info: [www.biggsmuseum.org](http://www.biggsmuseum.org) or 302-674-2211

**Got a show, project, or performance coming up?** E-mail [info@newarkartsalliance.org](mailto:info@newarkartsalliance.org) to share your news. The deadline is the 15th for the following month's issue.

The City of Newark's official 250th anniversary print is now on sale. The original painting is the work of contemporary folk artist Carol Dyer.

Signed 22-inch by 30-inch prints are \$100; unsigned are \$50. They can be purchased at the NAA, with 50% of sales benefiting our organization. They're also available in the Planning Department at 220 Elkton Road, and in Mayor Vance Funk's law office at 273 East Main Street.



## What's Up With the NAA

**Annual NAA Sidewalk Chalk Festival.** There will be a gallery at your feet as artists of all ages decorate Main Street's walkways with chalk creations on Saturday, August 23, from 12-4 p.m. Meet at the Academy Building lawn. The entry fee is \$2; prizes will be awarded. This event is held in conjunction with Delaware Concert Band Festival sponsored by the Downtown Newark Partnership.

**New designer needed!** The designer for the monthly NAA newsletter, Valerie Prince, has left the position after three years of service. Thanks, Valerie, for all your hard work and creativity!

This is a volunteer task, and the newsletter is formatted in Quark XPress, although it could be switched to another program. For details, contact Terri Gillespie, editor, at 302-489-9436.

### Great gifts at the NAA Gallery Shop



Jewelry, poetry, ceramics, photos, paintings, funky furniture, scarves, and much more – created by our members



### ADVERTISE IN ARTFORMS

- Your ad reaches readers who love the arts, both in print (about 750 circulation) and in the download at [www.newarkartsalliance.org](http://www.newarkartsalliance.org) – for the same low price!
- 2.25" block – \$20 each or \$70 for four insertions
- 2.25" x 4.5" (vertical or horizontal) – \$40 each or \$140 for

- four insertions
  - Ads do not have to run in consecutive issues to get the multiple-insertion rate
  - Camera-ready, or we design – no charge
- Contact Terri Gillespie,  
302-489-9436 or  
[swingsambasoul@gmail.com](mailto:swingsambasoul@gmail.com).

# Spotlight on Community Arts

**Poetry presence.** JoAnn Balingit, a Newark poet (and NAA member), has been named Delaware's Poet Laureate. In that role, she promotes awareness and enjoyment of poetry throughout the state through projects such as motivating writers and sponsoring educational programs, readings, and retreats. She succeeds Fleda Brown, who held the position until 2007.

**New musical event.** The Delaware Concert Band Festival will be held Saturday, August 23, from noon-6 p.m. on the Academy Building lawn on Main Street. This show features bands from around the state playing favorite tunes. Each will perform separately, then unite for a grand finale. The event also features the Newark Arts Alliance's Annual Sidewalk Chalk Festival (see page 3.)

**Taste tix on sale.** The fifth annual Taste of Newark is expected to sell out by the end of summer, so grab your tickets while you can! The event is set for Sunday, September 21, from noon-3 p.m. on The University of Delaware's Old College lawn on Main Street.

Co-sponsored by the University, Mayor Vance Funk, and the Downtown Newark Partnership, Taste of Newark features the very best of Newark restaurants, as well as area wineries and breweries.

Tickets, priced at \$40, can be purchased at Mayor Funk's office at 273 East Main Street; the Planning Department of City Hall; and the Downtown Parking Office on the second floor of the Galleria on Main Street.

**Film fest expands.** The Fourth Annual Newark Film Festival brings up to 35 "movies that matter" to Cinema Center 3 in the Newark Shopping Center starting September 4.

This year, the festival has been expanded to a full week, running through September 11. In addition, "The DAM Best of the Fest" will be shown at the Delaware Art Museum (get it?) on September 12-14.

Among the films booked are "Chop Shop" by Ramin Bahrani and the documentaries "Young at Heart" by Stephen Walker, "Encounters at the End of the World" by Werner Herzog, and "Taxi to the Dark Side" by Alex Gibney. Schedule and tickets: [www.newarkfilm.com](http://www.newarkfilm.com)

**Songwriting competition.** The International Songwriting Competition (ISC) is accepting entries for the 2008 contest. The deadline October 15. Among the judges are performers Rob Thomas (Matchbox 20), Chaka Khan, Ray Davies (The Kinks), Loretta Lynn, Tom Waits, T-Pain, Robert Smith

Continued on page 12

---

**Call to Artists** Continued from page 5

---

## OTHER OPPORTUNITIES

**Art at the Newark Farmer's Market.** The Newark Food Co-op hosts a weekly Farmer's Market on Sundays in the parking lot at Market East Plaza.

In addition to local produce, baked goods, and other edibles, the market has space for artists to rent. The guidelines are:

- Everything sold must be locally made.
- The table fee is \$5 per week.
- The season runs through November 23.
- Vendors begin setting up at 9 a.m., are ready to go by 10 a.m., and stay open through 2 p.m. They may not begin breaking down their station prior to 2 p.m.
- Vendors must give at least a week's notice to reserve a table.
- Vendors must fill out a contract and liability policy.

To reserve a table, contact Gina Cimino, Marketing, Newark Natural Foods Co-op, 280 E. Main Street, Newark, DE 19711, 302-368-5894.

**Artful bras (and a tie) battle breast cancer.** Your design on a bra or tie could be selected as one of eight artworks in the "Breast'takingly Beautiful" exhibit, part of the Chesapeake City Ecumenical Association's second annual art show and auction. All proceeds from this exhibit, plus 10% of the net sales of other artwork, will be donated to The Center to fund patient and survivor support programs.

The bras and the red ties (to represent the 1% of men diagnosed each year with breast cancer) are available by contacting Deb Forsythe at 410-620-9506. The artwork must be completed by December 2008. The event will be held Saturday, January 17, at four member churches. Info: [ccea4u.com](http://ccea4u.com)

**CCArts sets fall show.** The CCArts Annual Artisans Craft Show is looking for artisans, specifically in fine craft and photography (no additional jewelry or stained glass will be accepted). The show will be held November 7-9 at the Center for the Creative Arts in Yorklyn, DE. The fee is \$120. Contact Susan Logan at [slogan@ccarts.org](mailto:slogan@ccarts.org) or 302-239-2434 x104 for an application and more information.

**Chesapeake artwork.** The Talbot County Visual Arts Center (TCVAC) in Easton, MD, is hosting its second annual "Life on the Chesapeake" exhibit on October 3-November 1. Work eligible for this national, juried show encompasses any painting, drawing or other portrayal in a two-dimensional medium, referencing the life, commerce, landscapes, and wildlife, past and present, of the Bay itself and its watershed region.

The deadline for applications is September 1. Info: Chairman Mary Ekroos, 410-822-6904, or [www.talbot-art-center.org](http://www.talbot-art-center.org).

Mark Houlday, Ahlen Moin, Aina Nergaard-Nammack, Mary Putman, Pamela Skwish, Jeffrey Smith, Beth Trepper; *Illinois*: Chuck Quint; *Maryland*: Matthew A. Basham, Kristina Goverts; *New Jersey*: Haeley Kyong; *New York*: Dan McCormack; *Pennsylvania*: Jay DelGreco, Chad Cortez Everett, Caryn L. Hetherston, Jonathan Levy, Karen O'Lone Hahn, Peter Prusinowski; *Texas*: Roxanna Tuff.

The opening reception will be held Friday, September 5, from 7-9 p.m. at the NAA. The show runs through October 11.

◆◆◆◆◆  
Masquerade  
Gala invitations  
are being  
mailed in  
September.

If you have not  
received an  
invitation in  
previous years  
and would like  
to be added to  
the mailing list,  
visit the Mosaic  
Web site (see  
below right)  
and click on  
"Tickets."

◆◆◆◆◆



## Save the date!

The next Mosaic Gala will be on November 1, from 7-10 pm at the University of Delaware Trabant Center.

This evening of performances, fine food and live and silent auctions will benefit these five Newark non-profit groups:

- Chapel Street Players
- Delaware Dance Company
- Mid-Atlantic Ballet
- Newark Arts Alliance
- Newark Symphony Orchestra

For more information visit:

[www.newarkartsalliance.org/mosaic.html](http://www.newarkartsalliance.org/mosaic.html)

## WITH THE NAA

### Exhibit: "Feast Your Eyes"

An open, juried show on the theme of food

Drop-off: October 10-12

Opening reception: Friday, October 17, 7-9 p.m.

Pick-up: Sunday, November 23

**Holiday Art Market deadline.** The deadline for applications to be part of the NAA's annual show and sale is August 15. The Holiday Art Market is set for November 28-December 31, with an artist's reception on Friday, December 5, from 7-9 p.m.

**NAA Gallery Shop – for members only!** You can submit your original artwork for consideration to be sold in the NAA Gallery Shop. For guidelines, see page 8. This info is also posted on our Web site.

**NAA Art Loop.** Interested in exhibiting your work? The loop is held on a monthly basis at several locations on and near Main Street, including Blue Bamboo Healing Arts Studio, Adria Café, You've Been Framed, Main Street Florist, Home Grown Café, Hardcastle Gallery, Sinclair's Café, Central Perk, Brewed Awakenings, Gecko Fashions, and Caffé Gelato. The spaces hold approximately 12 pieces. Contact Pamela Skwish at 302-731-9289.

Continued on page 11

## NAA Exhibition Gallery Guidelines

For juried shows, artists may submit up to three pieces. The submission fee is \$5 per artwork for adult shows. This charge supports promotional and other costs associated with the exhibit. If the fee prohibits you from participating, please write to the Gallery Committee and request a waiver.

Please include label on each entry with your name, the title of the work, the medium (acrylic, raku, computer scan, etc.), your phone number and e-mail address, and a selling price, if applicable. (Work may be marked NFS.) All 2-D work must have a hanging wire on the back and must be framed in keeping with professional standards (no dirty mats, damaged glass, chipped frames, etc.).

Commission on sales to the NAA is 20% for working members (at least four volunteer hours per month), 30% for non-working members, and 40% for non-members.

## Classy glass decorates NAA's new site

Now there's no mistaking the NAA's new location! We're not just another one of the stucco buildings in Market East Plaza—there's definitely an eye-catching element.

Thanks to a group of dedicated mural-makers, a mosaic is growing around the windows and doors, adding the NAA's own unique touch to our site. Celeste Kelly, Debbie Hegedus, Carole Fox, and Sierra Fox are spearheading the outdoor artwork.

They've been busy breaking tiles, mirrors, and dishes into mosaic-sized pieces, gathering up a variety of other items, and affixing them to the stucco wall.

NAA summer interns Klare Frank and Rebecca Carlson are also involved in the project, and other art-inclined folks have stopped by to lend a hand.

Look closely, and you'll find that the mural has some 3-D elements, including a delicate ceramic hand. The tops of the colorful posts along the sidewalk are also decorated with glass beads.

Another project is also under way, with an NAA summer mural class creating an artwork on the wall at Cameras Etc. on Main Street.

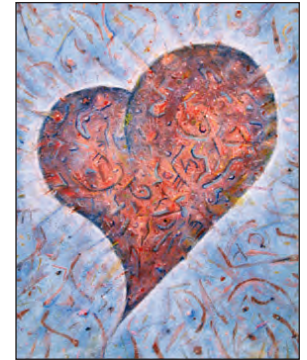


## OUR CURRENT EXHIBIT

Through August 9

### Fifth Annual Open Members Show

The NAA celebrates its members' creativity with this exhibit. Artists with work displayed in this show are Emily A. Reed, Andrew Winter, Malissa L. Reese, Nicole D. Thomas, Kristina Goverts, Doris Crowley, Pam Skwish, Norman Bell, Paula Bell, Boden Day, Rowena Macleod, Gzifa Akuji, Karen O'Lone-Hahn, Susan Amadio, Margaret Sarner, Minori Thorpe, Nancy Breslin, Rebecca Harnois, Jayne Levy-Polis, and Cindy Brinker. These artists work in a variety of media, including oil and acrylic paint, assemblage, monoprints, ceramics, photography, collage, photo print on fabric, digital prints, and acrylic and wood.



'Heart No. 1' by Boden Day

## COMING NEXT

### August 15-30: "The Art of Camp Imagine"

Work by young artists in the NAA's summer camps and classes  
Opening reception: Friday, August 15, 7-9 p.m.

### September 5-October 11: "The Ego Show"

A national, juried exhibit  
Opening reception: Friday, September 5, 7-9 p.m.

**DEADLINE DEADLINE DEADLINE DEADLINE**

The deadline for the September-October issue of ArtForms is August 15.

## AgoraNet, Inc.

314 E. Main Street, Suite 1  
Newark, DE 19711  
302-224-2475  
<http://www.agora-net.com>

Web Site Design

Web Site Hosting

Software Development

*Connecting businesses to the future since 1996 ...*

## WITH THE NAA

At the NAA unless otherwise listed

**Fifth Annual NAA Members Show**  
Through August 9

**The Art of Camp Imagine**

Opening reception: Friday, August 15  
@ 7-9 p.m.  
Through August 30

**Sidewalk Chalk Festival**

(part of the Delaware Concert Band  
Festival)  
Saturday, August 23 @ 12-4 p.m.  
Academy Building lawn, Main Street



**The Ego Show**

Opening reception: Friday,  
September 5 @ 7-9 p.m.  
Through October 11

## NAA ART GROUPS

**DelaWhere Newark Poetry Group**

Tuesdays @ 8-10 p.m. – \$3 cover  
Suggested for age 15 & up  
Info: [www.delawhere.org](http://www.delawhere.org) or  
302-290-5881

**Loose Threads – Artists Group**

Fiber arts, painting, jewelry & more

3rd Wed. @ 7 p.m.

Info: Laura Spencer, 302-453-1351

**NAA Advisory Committee**

2nd Wed. @ 6 p.m.

**NAA Board of Directors**

Call the NAA for date & location

**NAA Exhibition Gallery Committee**

1st Mon. @ 5:30 p.m.

Info: Maureen Kamerick,  
302-453-8866

**NAA Gallery Shop Committee**

4th Wed. @ 7 p.m.

Info: Jeff Smith, 302-368-1089

**NAA Painting Group**

On hiatus for the summer – starting  
up again in September

Info: Pamela Skwish, 302-731-9289

## NEWARK ART SCENE

**Delaware Accordion Club**

3rd Sun. @ 2-5 p.m.

First State Diner

Info: 302-738-7378 or

[www.delawareaccordionclub.com](http://www.delawareaccordionclub.com)

**Delaware Concert Band Festival**

Saturday, August 23 @ 12-6 p.m.

Academy Building lawn, Main Street

**Friends of Newark Coffeehouse**

Friday, August 22 @ 6-8 p.m.

Brew Ha Ha, Galleria, Main Street

**Newark Community Day**

Sunday, September 14 @ 10 a.m.-  
5 p.m.

Univ. of DE Green and Main Street

**Newark International Folkdancers**

No partner necessary

Fri. @ 8 p.m.

George Wilson Community Center

Info: 302-737-7321 or

[lsmat@udel.edu](mailto:lsmat@udel.edu)

**Newark Open Bluegrass/Oldtime  
Jam**

Any skill level, bring instruments

Thurs. @ 7:30-10 p.m.

St. Thomas Episcopal Church

**Scottish Country Dancing**

No charge, no partner necessary

Mondays @ 7:30 p.m.

St. Thomas Episcopal Church

Info: 302-368-2318

## ARTS IN THE AREA

All Delaware unless otherwise listed

**New Candlelight Theatre  
“Phantom”**

August 8-October 5

Arden, DE

Tickets: 302-475-2313 or

[www.newcandlelighttheatre.com](http://www.newcandlelighttheatre.com)

## NAA members: Get your work in the Gallery Shop!

The opportunity to show and sell work in the Gallery Shop at the Newark Arts Alliance building is one of the benefits of NAA membership. All types of artwork are welcome: paintings, pottery, cards and postcards, jewelry, sculpture and much more. The committee is particularly interested in expanded the collection of music, literature (novels, poetry, chapbooks, cartoon anthologies, etc.), and films for sale in the shop.

Items can be dropped off at any time during regular hours. Submissions are juried by the Gallery Shop Committee during the fourth week of each month. Accepted work will be displayed for one to three months.

The jury criteria are: originality (no kits or copies); well-crafted, skillful execution; and professional presentation. All work must be for sale. The commission to the NAA is 30% for non-working members and 20% for working members (at least four volunteer hours per month). All 2-D work must be framed with picture wire for hanging, or mounted, matted, and covered with acetate.

**Newark Arts Alliance**  
Classes • Exhibits • Gallery Shop  
Events • Art to Go • Murals  
[www.newarkartsalliance.org](http://www.newarkartsalliance.org)